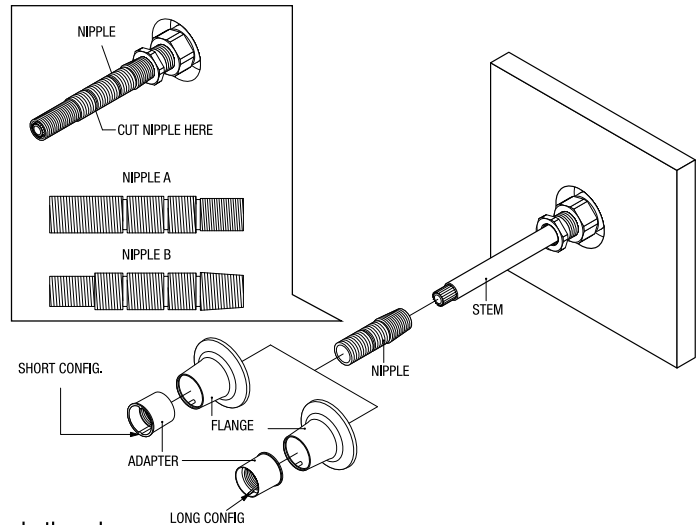


## 58217

### Installation Instructions

**Fits:**

American Brass. American Standard. Briggs.  
Central. Crane. Dick Brothers. Gerber. Kohler.  
Price Pfister. Royal Brass. Sayco. Sterling.  
Speakman. Savoy. Union Brass.

**INSTRUCTIONS:**

1. Remove handle, flange and nipple.
2. Locate nipple A; slide over and thread into stem, trying both ends.
3. If nipple A does not fit, locate nipple B and slide straight threaded end over stem and thread into stem. If this does not thread properly, flip over and thread using tapered end of nipple.
4. Once correct nipple is identified, remove nipple. Nipple will need to be cut at the first notch from the opposite end of the thread that threaded into stem. (Fig.1)
5. Depending on length of stem, flange can be used in either a short or long configuration. Determine best configuration for your application and install nipple and flange.  
Note: Apply caulk to area where flange meets the wall to prevent water damage.
6. Re-install handle.